

## General Portraiture Advice

- Camera not too close to subject.
  - Use a little telephoto instead.
- Subject not too close to backdrop.
- Open aperture to limit depth of field.
- White balance is especially important.

## General Portraiture Advice

- Use spot exposure.
- Use bracketing.
- Take more pictures than you think you need.
- Check images before quitting.
  - Check histogram if possible.
  - Watch out for high-key images.
- Woman as subject?
  - Especially avoid wide angle
  - Especially avoid setting the camera too close

## Clothing

- Dress for the ages
- Avoid trendy clothes, turtle necks, prints
- Use solid colors or fine pinstripes



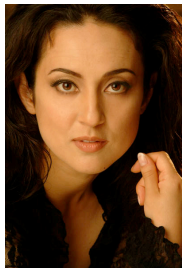


## Posing

- Subject should not look bored or uncomfortable.
  - Talk and distract the subject.
- Try changing things
  - turning subject a little, place hands in different positions.
- Try to press the shutter when you see the eyes connect with the camera.
- Child? Ask a child about a favorite toy.



## Posing



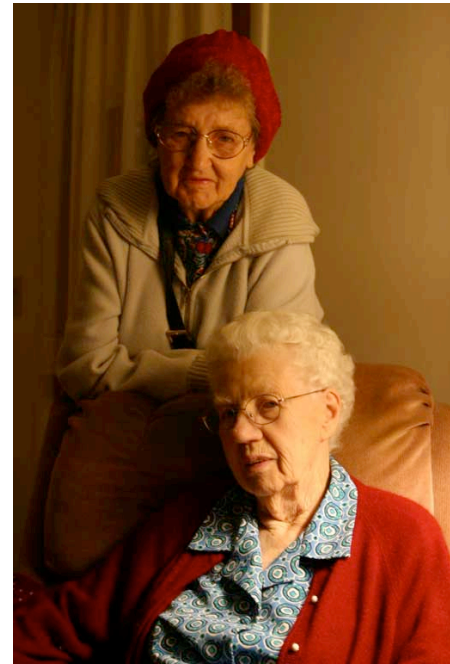
- For Interest
  - Try changing the angle of the head and the gaze.
  - Straight on *can* be boring/predictable.
  - Depending on the lighting, straight on can *also* look strong, straightforward, and intense.



## In The Field

- Try to photograph people *doing what they're doing*; don't always pose them.
- Include hints as to either the *character* or *culture* of the subject. Add narrative interest.
- Look around for interesting lighting sources. (computer projector, window shades) Have some shading of the face (show form, or drama). Even lighting is often boring.
- Move them away from the wall, toward the camera. You don't want to capture their shadow.





# Photoshop Variations

- Levels



- Saturation

